

水 4/1 水



VERZEICHNIS DER ORIENTALISCHEN HANDSCHRIFTEN  
IN DEUTSCHLAND · SUPPLEMENTBAND 28

VERZEICHNIS DER ORIENTALISCHEN HANDSCHRIFTEN  
IN DEUTSCHLAND

IM EINVERNEHMEN MIT DER  
DEUTSCHEN MORGENLÄNDISCHEN GESELLSCHAFT

BEGRÜNDET VON  
WOLFGANG VOIGT

WEITERGEFÜHRT VON  
DIETER GEORGE

IM AUFTRAGE DER  
AKADEMIE DER WISSENSCHAFTEN IN GÖTTINGEN

HERAUSGEGEBEN VON  
HARTMUT-ORTWIN FEISTEL

SUPPLEMENTBAND 28



FRANZ STEINER VERLAG STUTTGART  
1998

# DEMOTISCHE URKUNDEN AUS HAWARA

UMSCHRIFT, ÜBERSETZUNG  
UND KOMMENTAR

VON

ERICH LÜDDECKENS

UNTER MITARBEIT VON

ROLF WASSERMANN

NACH VORARBEITEN VON W. ERICHSEN UND CH. F. NIMS

BEARBEITUNG DER GRIECHISCHEN REGISTRATUR-  
VERMERKE VON R. W. DANIEL

TAFELN



FRANZ STEINER VERLAG STUTT GART  
1998

Dieser Band wurde durch die Bund-Länder-Kommission für Bildungsplanung und Forschungsförderung im Akademienprogramm mit Mitteln des Bundes und des Landes Berlin gefördert.

Die Deutsche Bibliothek - CIP-Einheitsaufnahme

**Lüddeckens, Erich:**

Demotische Urkunden aus Hawara / Umschrift, Übersetzung und Kommentar von Erich Lüddeckens. Unter Mitarb. von Rolf Wassermann. Nach Vorarbeiten von W. Erichsen und Ch. F. Nims. Bearb. der griech. Registratur-Vermerke von R. W. Daniel. - Stuttgart : Steiner

(Verzeichnis der orientalischen Handschriften in Deutschland ; Suppl.-Bd. 28)

ISBN 3-515-05408-1

Tafeln. - 1998



ISO 9706

Jede Verwertung des Werkes außerhalb der Grenzen des Urheberrechtsgesetzes ist unzulässig und strafbar. Dies gilt insbesondere für Übersetzung, Nachdruck, Mikroverfilmung oder vergleichbare Verfahren sowie für die Speicherung in Datenverarbeitungsanlagen. © 1998 by Franz Steiner Verlag Wiesbaden GmbH, Sitz Stuttgart. Gedruckt auf säurefreiem, alterungsbeständigem Papier. Druck: Druckerei Rhein Hessische Druckwerkstätte, Alzey.  
Printed in Germany

## Inhaltsverzeichnis

### Die Urkunden

- Urk. Hawara I: P.Carlsberg 34 (Kopenhagen)
- Urk. Hawara II: P.Carlsberg 35 (Kopenhagen)
- Urk. Hawara III: P.Carlsberg 36 (Kopenhagen)
- Urk. Hawara IVa: P.Carlsberg 37a (Kopenhagen)
- Urk. Hawara IVb: P.Carlsberg 37b (Kopenhagen)
- Urk. Hawara Va: P.Carlsberg 38a (Kopenhagen)
- Urk. Hawara Vb: P.Carlsberg 38b (Kopenhagen)
- Urk. Hawara VI: P.Hamburg dem. 10 + P.Kairo 50132
- Urk. Hawara VIIa: P.Carlsberg 39a (Kopenhagen)
- Urk. Hawara VIIb: P.Carlsberg 39b (Kopenhagen)
- Urk. Hawara VIIbis: P.BM 10608 (London)
- Urk. Hawara VIIIa: P.Hamburg dem. 14
- Urk. Hawara VIIIb: P.Hamburg dem. 11
- Urk. Hawara IXa: P.Hamburg dem. 12
- Urk. Hawara IXb: P.Hamburg dem. 12
- Urk. Hawara X: P.Kairo 50128
- Urk. Hawara XI: P.Kairo 50126
- Urk. Hawara XII: P.BM 10603 (London)
- Urk. Hawara XIII: P.Hamburg dem. 7
- Urk. Hawara XIV: P.BM 10605 (London)
- Urk. Hawara XV: P.BM 10606 (London)
- Urk. Hawara XVI $\alpha$ : P.Hamburg dem. 4
- Urk. Hawara XVI $\beta$ : P.Hamburg dem. 8
- Urk. Hawara XVII $\alpha$ : P.Hamburg dem. 5
- Urk. Hawara XVII $\beta$ : P.Hamburg dem. 6
- Urk. Hawara XVIII: P.Kairo 50131
- Urk. Hawara XIXa: P.BM 10604 (London)
- Urk. Hawara XIXb: P.BM 10604 (London)

## Inhaltsverzeichnis

---

Urk. Hawara XX: P.Hamburg dem. 13

Urk. Hawara XXIa: P.Hamburg dem. 2

Urk. Hawara XXIb: P.Hamburg dem. 2

Urk. Hawara XXII: P.Hamburg dem. 9

Urk. Hawara XXIII: P.Hamburg dem. 3

Urk. Hawara XXIV A–G: s. Spiegelberg, Demot. Denkm. III, Tf. L–LII.





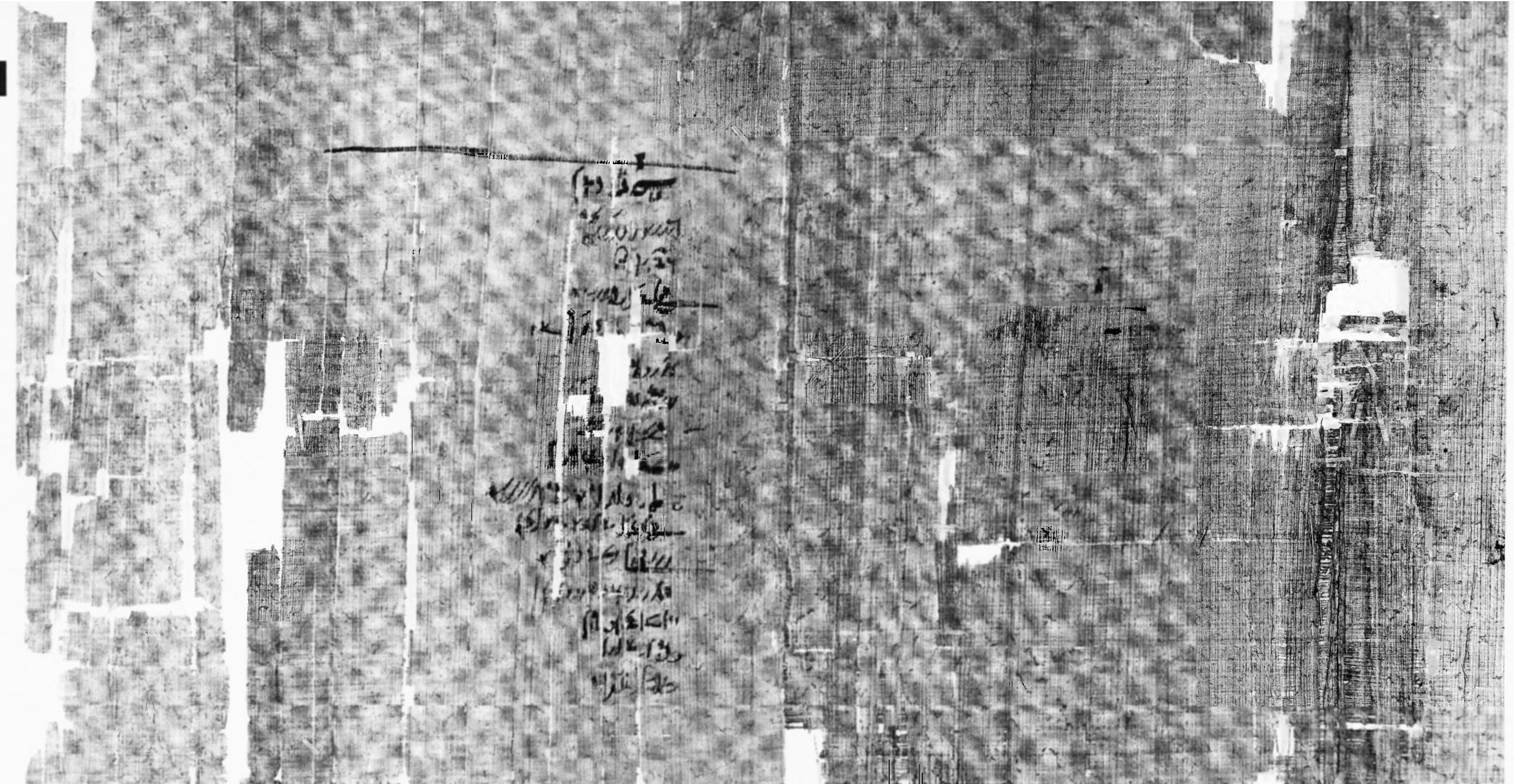


Handwritten text in Coptic script, likely a header or introductory section, located in the upper left corner of the page.

Main body of handwritten text in Coptic script, arranged in several horizontal lines across the center of the page.

Small handwritten notes or fragments located in the bottom right corner of the page.

TAFEL I  
Urk. Hawara I – Verso



1  
2  
3  
4  
5  
6  
7  
8  
9  
10  
11  
12  
13  
14  
15  
16  
17  
18  
19  
20  
21  
22  
23  
24  
25  
26  
27  
28  
29  
30  
31  
32  
33  
34  
35  
36  
37  
38  
39  
40  
41  
42  
43  
44  
45  
46  
47  
48  
49  
50  
51  
52  
53  
54  
55  
56  
57  
58  
59  
60  
61  
62  
63  
64  
65  
66  
67  
68  
69  
70  
71  
72  
73  
74  
75  
76  
77  
78  
79  
80  
81  
82  
83  
84  
85  
86  
87  
88  
89  
90  
91  
92  
93  
94  
95  
96  
97  
98  
99  
100

18287

1. *Handwritten Coptic text in a large, bold script, starting with a large circular symbol on the right side.*  
 2. *Second line of Coptic text.*  
 3. *Third line of Coptic text.*  
 4. *Fourth line of Coptic text.*  
 5. *Fifth line of Coptic text.*  
 6. *Sixth line of Coptic text.*  
 7. *Seventh line of Coptic text.*  
 8. *Eighth line of Coptic text.*  
 9. *Ninth line of Coptic text.*  
 10. *Tenth line of Coptic text.*

*Handwritten Coptic text in a smaller script, possibly a signature or a specific heading.*

*Handwritten Greek text in a cursive script, enclosed within a simple rectangular border.*  
 1. *Line 1 of Greek text.*  
 2. *Line 2 of Greek text.*  
 3. *Line 3 of Greek text.*

TAFEL 2  
Urk. Hawara II – Verso

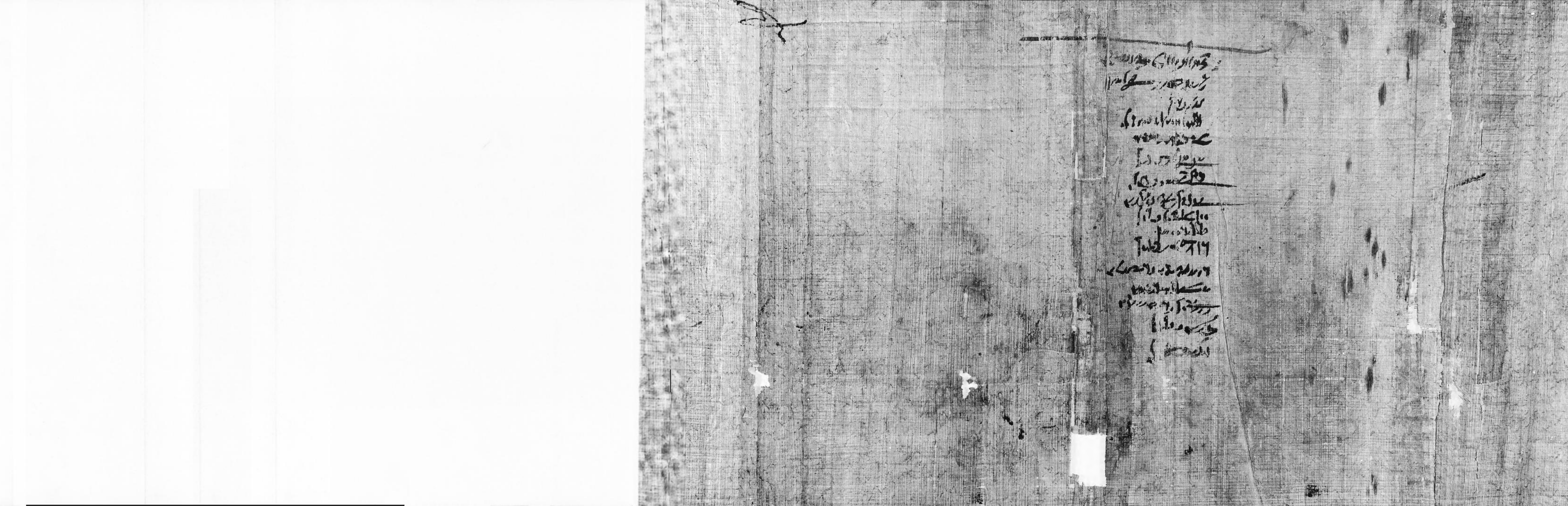
Handwritten Coptic text in a vertical column, consisting of approximately 15 lines of script. The text is written in a dark ink on a light-colored background. The script is a form of Coptic, likely from the Hawara papyri. The lines are roughly as follows (from top to bottom):

- Line 1:  $\alpha\beta\gamma\delta\epsilon\zeta\eta\theta\iota\kappa\lambda\mu$
- Line 2:  $\nu\omega\pi\rho\sigma\tau\upsilon\phi\chi\psi\omega$
- Line 3:  $\pi\rho\sigma\tau\upsilon\phi\chi\psi\omega$
- Line 4:  $\alpha\beta\gamma\delta\epsilon\zeta\eta\theta\iota\kappa\lambda\mu$
- Line 5:  $\nu\omega\pi\rho\sigma\tau\upsilon\phi\chi\psi\omega$
- Line 6:  $\alpha\beta\gamma\delta\epsilon\zeta\eta\theta\iota\kappa\lambda\mu$
- Line 7:  $\nu\omega\pi\rho\sigma\tau\upsilon\phi\chi\psi\omega$
- Line 8:  $\alpha\beta\gamma\delta\epsilon\zeta\eta\theta\iota\kappa\lambda\mu$
- Line 9:  $\nu\omega\pi\rho\sigma\tau\upsilon\phi\chi\psi\omega$
- Line 10:  $\alpha\beta\gamma\delta\epsilon\zeta\eta\theta\iota\kappa\lambda\mu$
- Line 11:  $\nu\omega\pi\rho\sigma\tau\upsilon\phi\chi\psi\omega$
- Line 12:  $\alpha\beta\gamma\delta\epsilon\zeta\eta\theta\iota\kappa\lambda\mu$
- Line 13:  $\nu\omega\pi\rho\sigma\tau\upsilon\phi\chi\psi\omega$
- Line 14:  $\alpha\beta\gamma\delta\epsilon\zeta\eta\theta\iota\kappa\lambda\mu$
- Line 15:  $\nu\omega\pi\rho\sigma\tau\upsilon\phi\chi\psi\omega$





TAFEL 3  
Urk. Hawara III - Verso



Handwritten text in a cursive script, likely Coptic or Greek, arranged in several lines. The text is written on a grid-patterned papyrus fragment. The script is dark and appears to be a form of early medieval writing. The lines of text are roughly parallel to the grid lines of the papyrus.







TAFEL 4  
Urk. Hawara IV a – Verso

Handwritten text in Coptic script, arranged in approximately 12 vertical columns. The script is dark and appears to be written on a textured, possibly papyrus or linen, surface. The text is somewhat faded and difficult to read due to the image quality and the texture of the original document. The columns are roughly aligned, with some irregularities in spacing and line length.

40 zu 40 86 534 Simple 281 Taf 40 in Hillel



TAFEL 5  
Urk. Hawara IV b – Verso

Handwritten text in Coptic script, likely a list or record. The text is arranged in several lines, with some lines starting with a horizontal line. The script is dense and difficult to decipher without specialized knowledge. The text appears to be a list of items or names, possibly related to a church or a community. The lines are roughly as follows:

- Line 1:  $\overline{\text{ⲛⲓⲁⲛⲓⲛⲓⲛⲓ}}$
- Line 2:  $\overline{\text{ⲛⲓⲁⲛⲓⲛⲓⲛⲓ}}$
- Line 3:  $\overline{\text{ⲛⲓⲁⲛⲓⲛⲓⲛⲓ}}$
- Line 4:  $\overline{\text{ⲛⲓⲁⲛⲓⲛⲓⲛⲓ}}$
- Line 5:  $\overline{\text{ⲛⲓⲁⲛⲓⲛⲓⲛⲓ}}$
- Line 6:  $\overline{\text{ⲛⲓⲁⲛⲓⲛⲓⲛⲓ}}$
- Line 7:  $\overline{\text{ⲛⲓⲁⲛⲓⲛⲓⲛⲓ}}$
- Line 8:  $\overline{\text{ⲛⲓⲁⲛⲓⲛⲓⲛⲓ}}$
- Line 9:  $\overline{\text{ⲛⲓⲁⲛⲓⲛⲓⲛⲓ}}$
- Line 10:  $\overline{\text{ⲛⲓⲁⲛⲓⲛⲓⲛⲓ}}$





1. **Q**uodam diebus...  
 2. ...  
 3. ...  
 4. ...  
 5. ...  
 6. ...  
 7. ...  
 8. ...  
 9. ...  
 10. ...  
 11. ...  
 12. ...  
 13. ...  
 14. ...  
 15. ...  
 16. ...  
 17. ...  
 18. ...  
 19. ...  
 20. ...  
 21. ...  
 22. ...  
 23. ...  
 24. ...  
 25. ...  
 26. ...  
 27. ...  
 28. ...  
 29. ...  
 30. ...  
 31. ...  
 32. ...  
 33. ...  
 34. ...  
 35. ...  
 36. ...  
 37. ...  
 38. ...  
 39. ...  
 40. ...  
 41. ...  
 42. ...  
 43. ...  
 44. ...  
 45. ...  
 46. ...  
 47. ...  
 48. ...  
 49. ...  
 50. ...  
 51. ...  
 52. ...  
 53. ...  
 54. ...  
 55. ...  
 56. ...  
 57. ...  
 58. ...  
 59. ...  
 60. ...  
 61. ...  
 62. ...  
 63. ...  
 64. ...  
 65. ...  
 66. ...  
 67. ...  
 68. ...  
 69. ...  
 70. ...  
 71. ...  
 72. ...  
 73. ...  
 74. ...  
 75. ...  
 76. ...  
 77. ...  
 78. ...  
 79. ...  
 80. ...  
 81. ...  
 82. ...  
 83. ...  
 84. ...  
 85. ...  
 86. ...  
 87. ...  
 88. ...  
 89. ...  
 90. ...  
 91. ...  
 92. ...  
 93. ...  
 94. ...  
 95. ...  
 96. ...  
 97. ...  
 98. ...  
 99. ...  
 100. ...

Handwritten text in a cursive script, likely Coptic, arranged in approximately 15 lines. The text is written in black ink on a light-colored, textured surface. The script is dense and difficult to decipher without specialized knowledge of the language. The lines are roughly horizontal and separated by small gaps. The overall appearance is that of a fragment of an ancient manuscript.

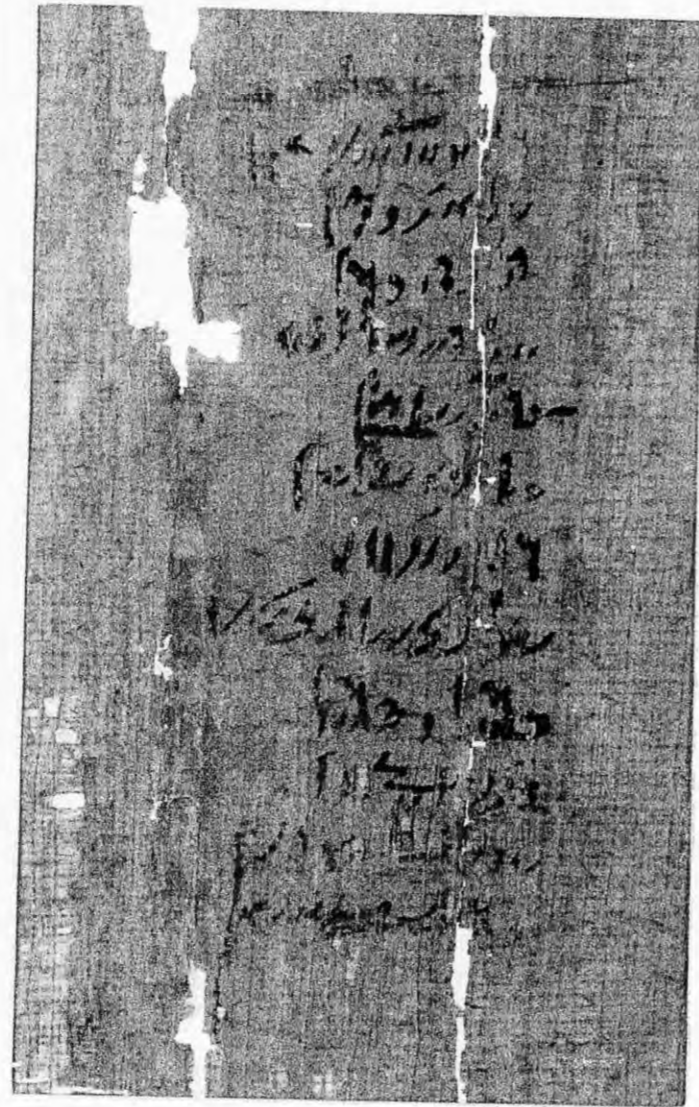


1. *[Faded Coptic text, line 1]*  
 5. *[Faded Coptic text, line 5]*  
 10. *[Faded Coptic text, line 10]*

1. *[Faded Coptic text, line 1]*  
 5. *[Faded Coptic text, line 5]*  
 10. *[Faded Coptic text, line 10]*

TAFEL 8

Urk. Hawara VI – Verso



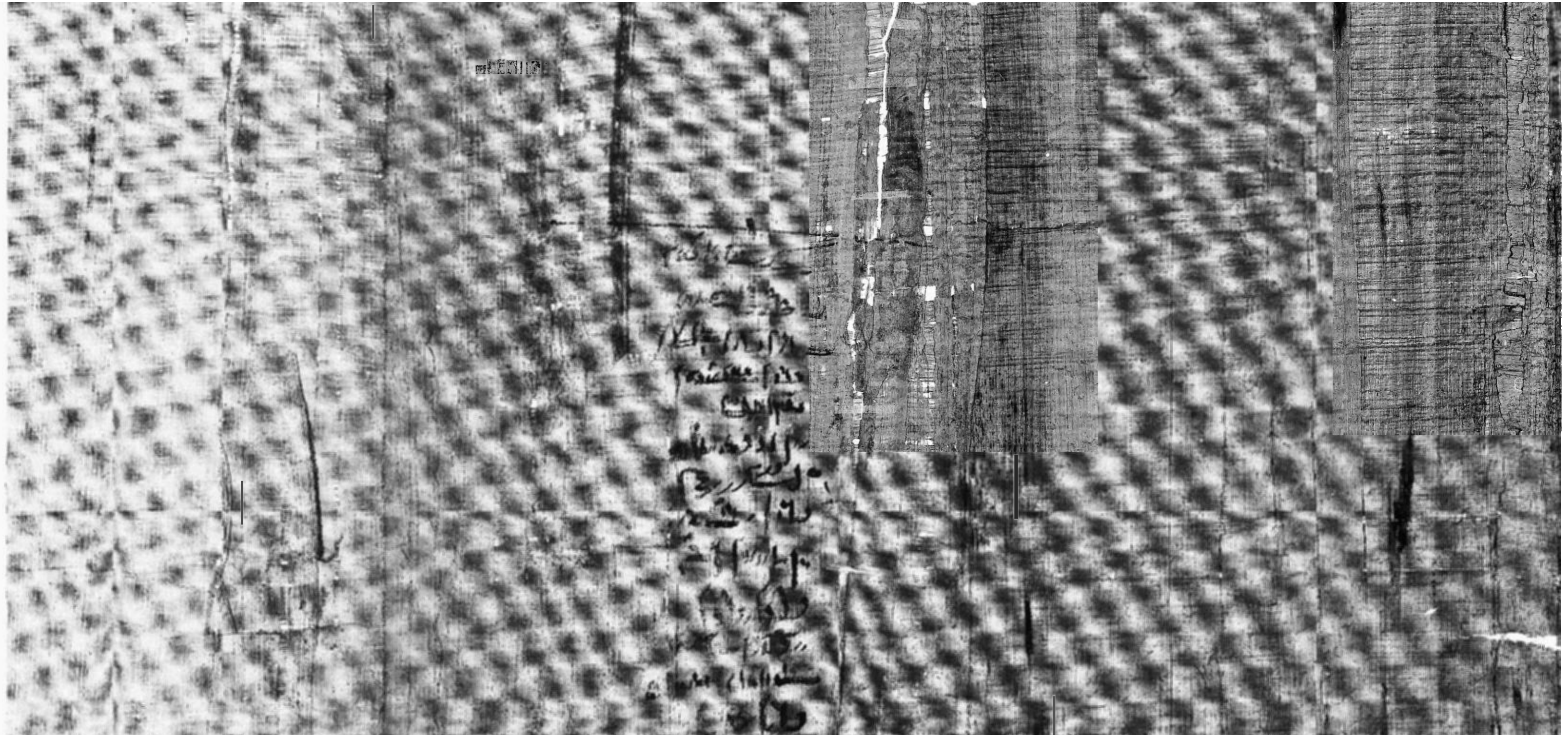




TAFEL 9  
Urk. Hawara VII a - Verso



TAFEL 10  
Urk. Hawara VII b – Verso





PREUSSISCHER  
STAATS-  
BIBLIOTHEK  
ZU BERLIN  
KULTURBESTÄNDE

11 zu 40 80534 - Suppl. 28, Taf. 203 [in Hülle]

Handwritten text in Coptic script, arranged in approximately 10 horizontal lines. The script is dense and appears to be a form of early Coptic. The text is written on a dark, textured surface, likely papyrus or parchment, which shows significant signs of wear, including numerous holes and irregular tears. The lines of text are roughly parallel to each other, though some are slightly curved or broken due to the damage to the original document. The ink is dark, providing a high contrast against the lighter background of the papyrus.



1.

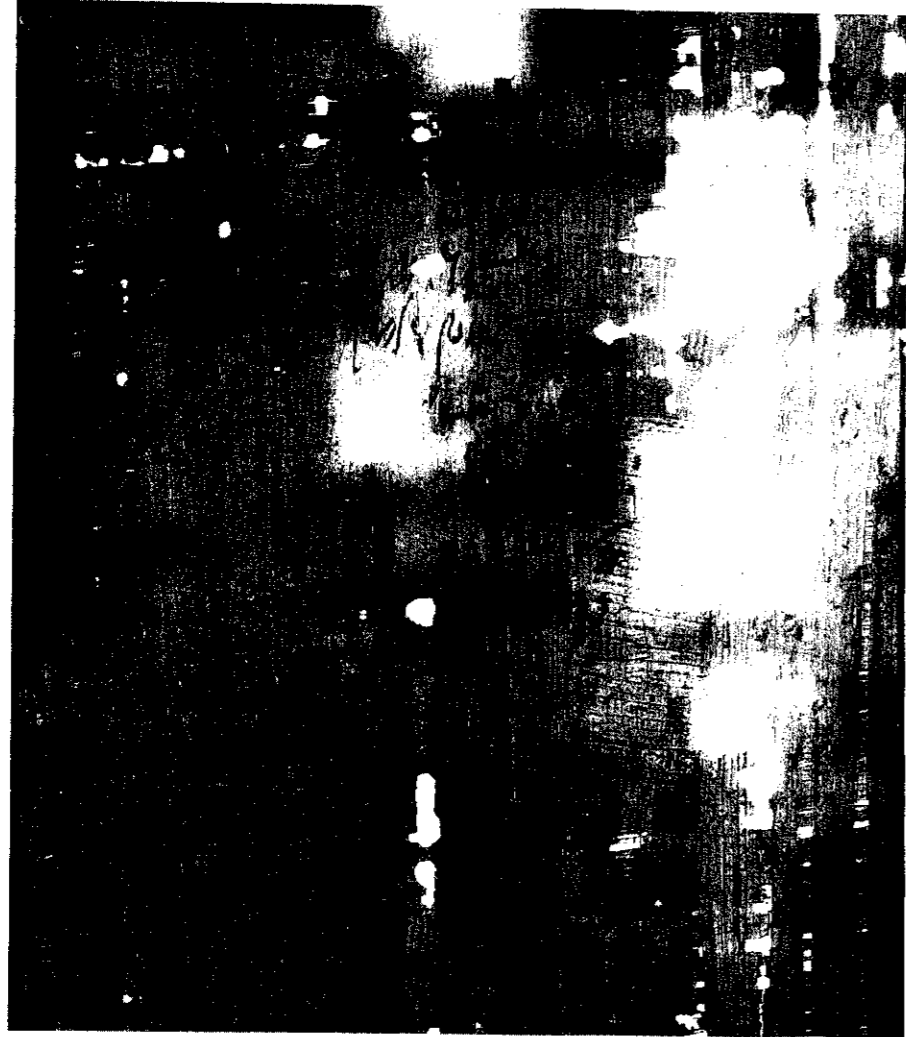
Handwritten text in Arabic script, consisting of approximately 10 lines. The script is dense and appears to be a form of early Arabic or Coptic script. The text is somewhat obscured by dark ink smudges and damage to the original document.

Handwritten text in Arabic script, consisting of approximately 10 lines. This section is more legible than the one on the left, though still affected by some ink smudges. It begins with a large, stylized initial letter, possibly 'ب' or 'پ'.

5.

5.

TAFEL 13  
Urk. Hawara VIII b – Verso



13 zu 4° 80534 - Sumpf, 28, Taf. 102 für Hillel

TAFEL 14  
Urk. Hawara IX a – Recto

Fragmentary papyrus scroll with several lines of Coptic text in a cursive script. The text is partially obscured by numerous holes and tears in the material.

Urk. Hawara IX b – Recto

Fragmentary papyrus scroll with several lines of Coptic text in a cursive script. The text is partially obscured by numerous holes and tears in the material.

TAFEL 14  
Urk. Hawara IX b – Verso



1.

Handwritten text in Coptic script, line 1.

Handwritten text in Coptic script, line 2.

Handwritten text in Coptic script, line 3.

Handwritten text in Coptic script, line 4.

5.

Handwritten text in Coptic script, line 5.

Handwritten text in Coptic script, line 6.

Handwritten text in Coptic script, line 7.

Handwritten text in Coptic script, line 8.

Handwritten text in Coptic script, line 9.

10.

Handwritten text in Coptic script, line 10.

Handwritten text in Coptic script, line 11.

Handwritten text in Coptic script, line 12.

Handwritten text in Coptic script, line 13.

Handwritten text in Coptic script, line 14.

15.

Handwritten text in Coptic script, line 15.

Handwritten text in Coptic script, line 16.

Handwritten text in Coptic script, line 17.

Handwritten text in Coptic script, line 18.

Handwritten text in Coptic script, line 19.

20.

Handwritten text in Coptic script, line 20.

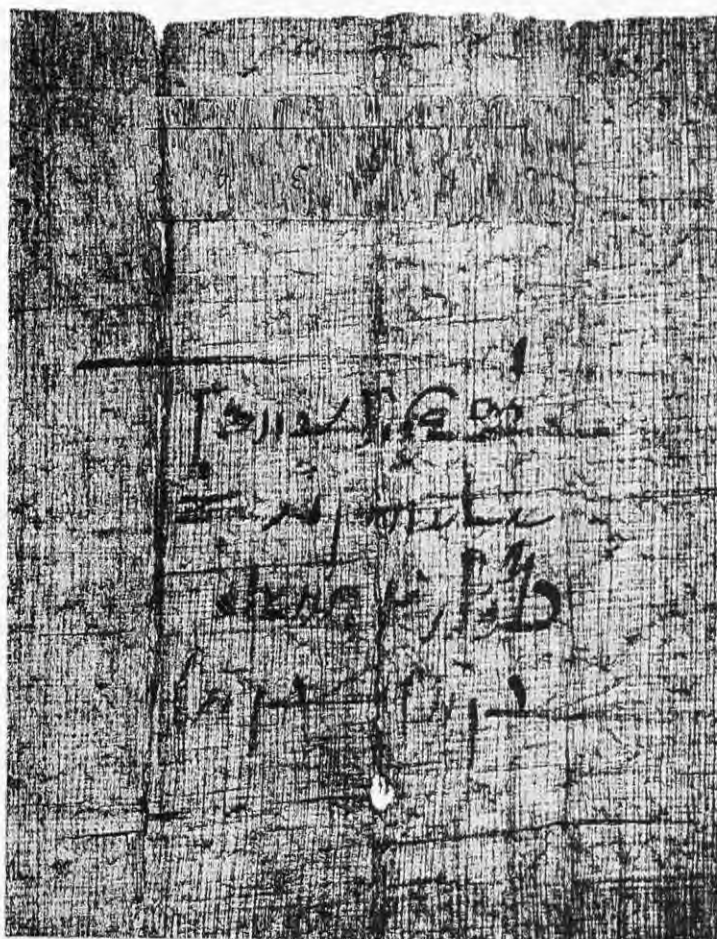
5.

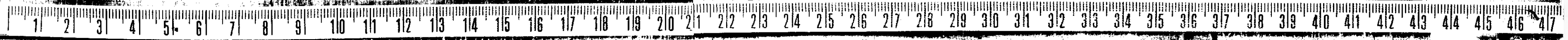
10.

15.

20.

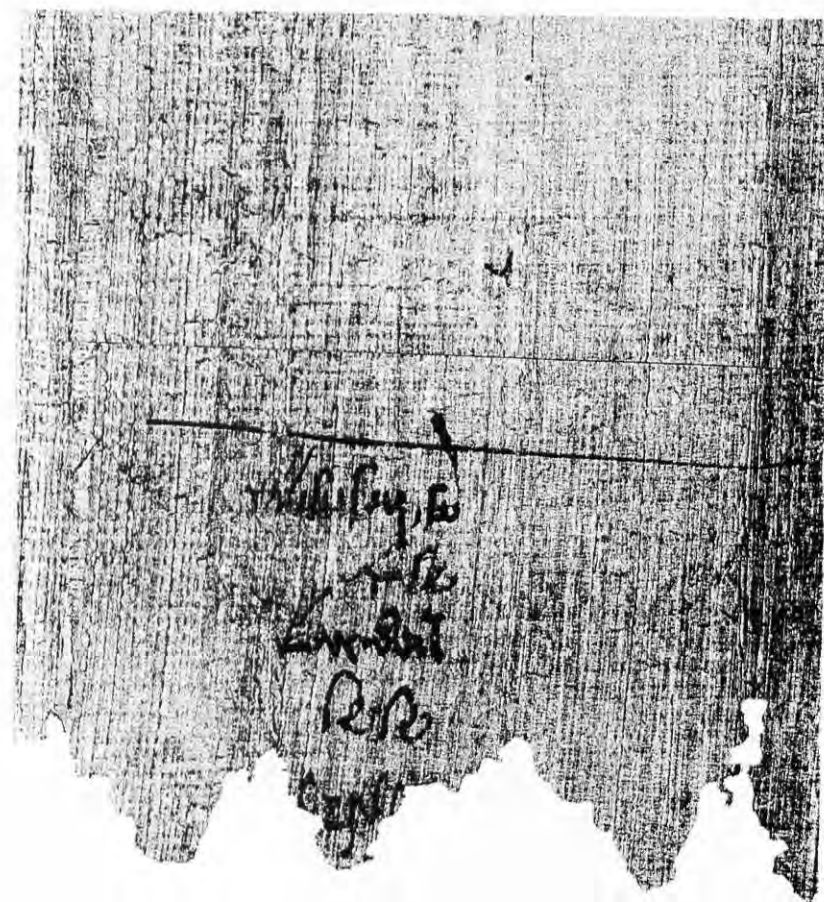
TAFEL 15  
Urk. Hawara X – Verso





Handwritten text in Coptic script, arranged in approximately 10 horizontal lines. The script is dense and appears to be a form of early Christian or monastic writing. The text is partially obscured by a large, dark, irregular stain on the right side of the page. The lines of text are roughly parallel to the ruler above.

TAFEL 16  
Urk. Hawara XI – Verso



Ms. 214. 40. 86. 534 - Sumpf, 28. Taf. 16. c. 2 [in Halle]





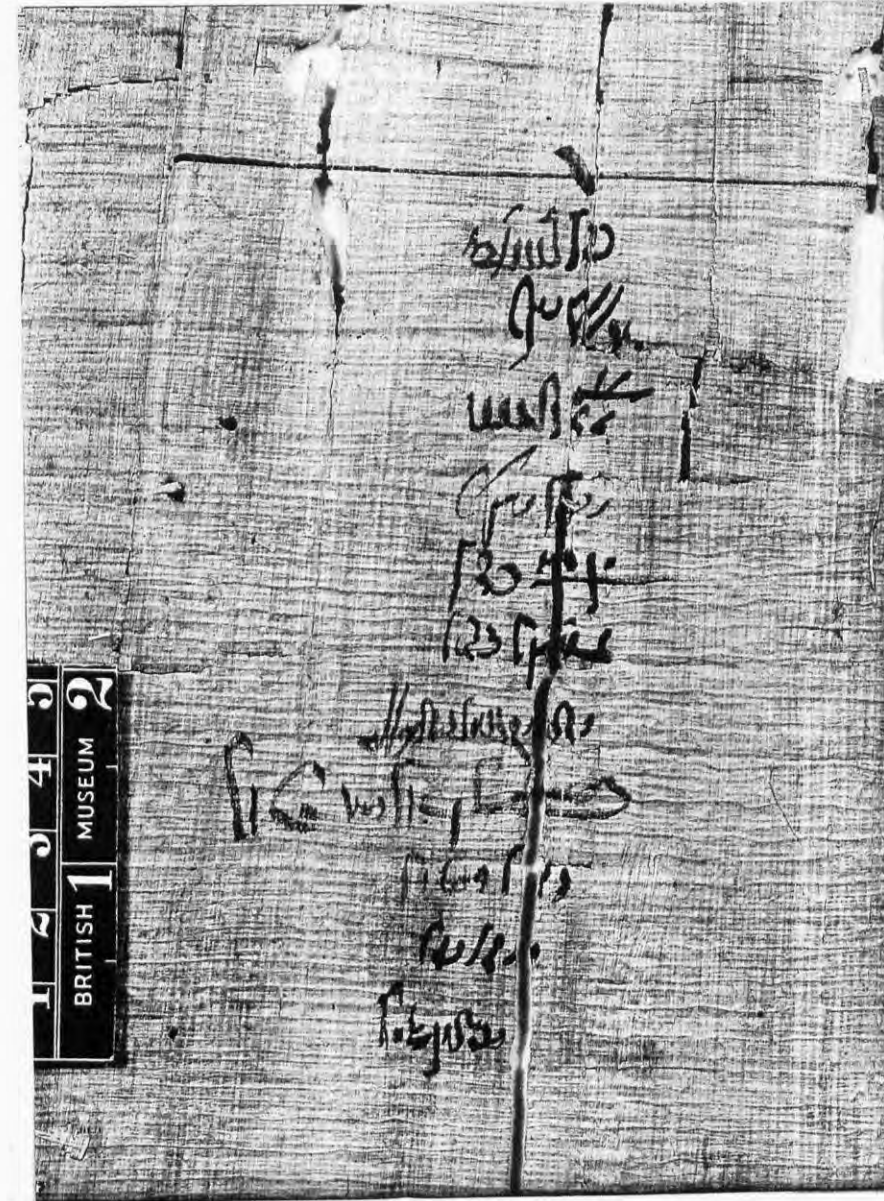
10603 H4 BRITISH MUSEUM 2

10603  
 Hieroglyphic text in Egyptian script, arranged in approximately 15 horizontal columns. The script is densely packed and covers most of the page's surface.

TAFEL 17  
 Urk. Hawara XII - Recto

Vertical text on the right edge of the scroll, likely a list of items or a continuation of the main text, written in a different script or as a marginal note.

Απολλωνιος Κρητοσεραυτος Απριλ Ημερησι 50 ηρησι χι κα ιρησι τεμυζε μεσητηρας επικελε στατηροισι ερησι ιρησι



1.

5.

10.

15.

1.

5.

10.

15.

Handwritten Coptic text, line 1

Handwritten Coptic text, line 2

Handwritten Coptic text, line 3

Handwritten Coptic text, line 4

Handwritten Coptic text, line 5

Handwritten Coptic text, line 1

Handwritten Coptic text, line 2

Handwritten Coptic text, line 3

Handwritten Coptic text, line 4

Handwritten Coptic text, line 5

Handwritten Coptic text, line 6

Handwritten Coptic text, line 7

Handwritten Coptic text, line 8

Handwritten Coptic text, line 9

Handwritten Coptic text, line 10

Handwritten Coptic text, line 11

Handwritten Coptic text, line 12

Handwritten Coptic text, line 13

Handwritten Coptic text, line 14

Handwritten Coptic text, right margin, line 1

Handwritten Coptic text, right margin, line 2

Handwritten Coptic text, right margin, line 3

Handwritten Coptic text, right margin, line 4

Handwritten Coptic text, right margin, line 5

Handwritten Coptic text, right margin, line 6

TAFEL 18  
Urk. Hawara XIII - Verso

Handwritten text in a cursive script, likely Coptic, arranged in several lines. The text is partially obscured by a horizontal line drawn across the middle of the fragment. The script is dense and difficult to decipher due to the fragmentary nature of the papyrus.

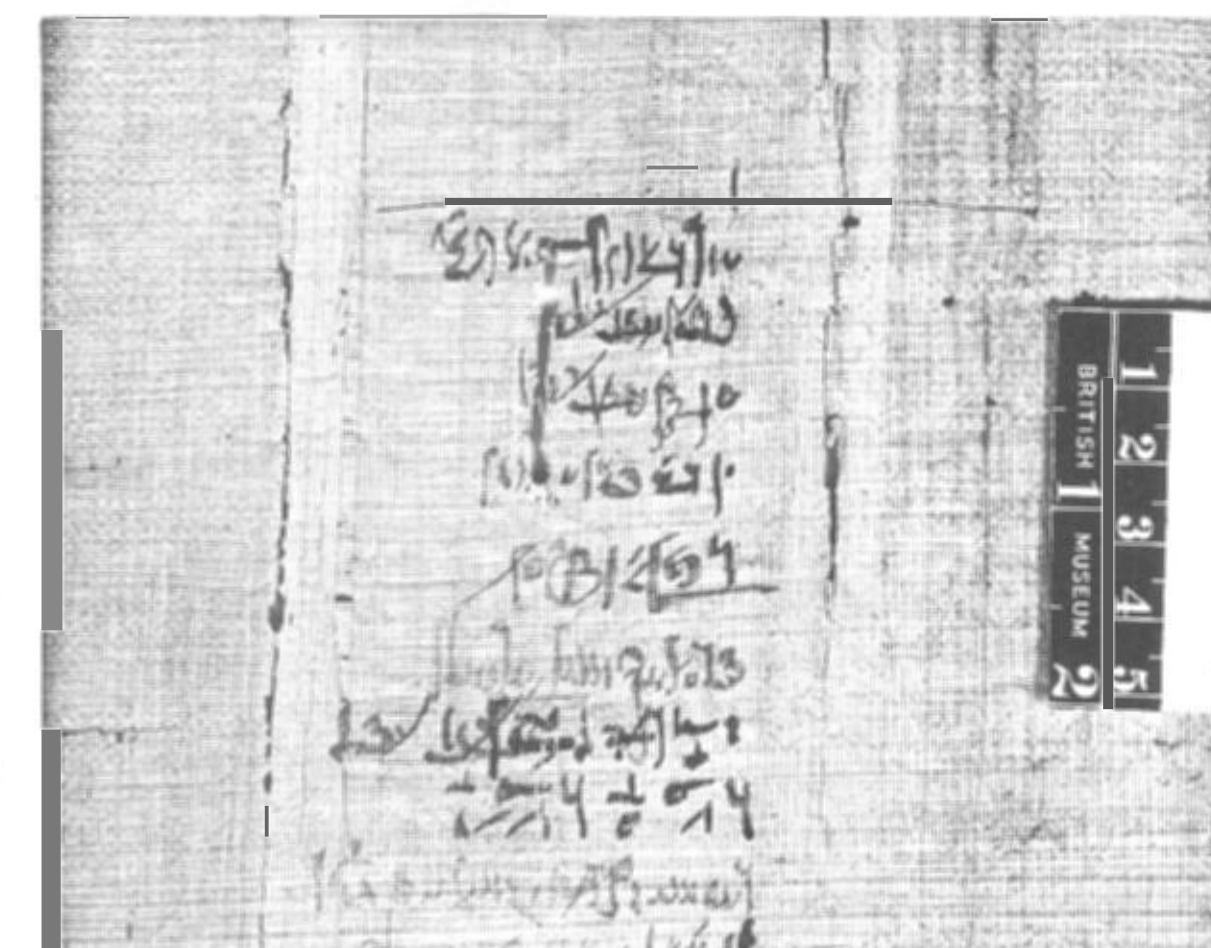
Handwritten text at the bottom of the fragment, possibly a signature or a date, written in a similar cursive script.

18 zu 40 86 534 - Suppl. 28, Taf. 18 [in Hille]

1. ...  
 2. ...  
 3. ...  
 4. ...  
 5. ...  
 6. ...  
 7. ...  
 8. ...  
 9. ...  
 10. ...  
 11. ...  
 12. ...  
 13. ...  
 14. ...  
 15. ...  
 16. ...  
 17. ...  
 18. ...  
 19. ...  
 20. ...  
 21. ...  
 22. ...  
 23. ...  
 24. ...  
 25. ...  
 26. ...  
 27. ...  
 28. ...  
 29. ...  
 30. ...  
 31. ...  
 32. ...  
 33. ...  
 34. ...  
 35. ...  
 36. ...  
 37. ...  
 38. ...  
 39. ...  
 40. ...  
 41. ...  
 42. ...  
 43. ...  
 44. ...  
 45. ...  
 46. ...  
 47. ...  
 48. ...  
 49. ...  
 50. ...  
 51. ...  
 52. ...  
 53. ...  
 54. ...  
 55. ...  
 56. ...  
 57. ...  
 58. ...  
 59. ...  
 60. ...  
 61. ...  
 62. ...  
 63. ...  
 64. ...  
 65. ...  
 66. ...  
 67. ...  
 68. ...  
 69. ...  
 70. ...  
 71. ...  
 72. ...  
 73. ...  
 74. ...  
 75. ...  
 76. ...  
 77. ...  
 78. ...  
 79. ...  
 80. ...  
 81. ...  
 82. ...  
 83. ...  
 84. ...  
 85. ...  
 86. ...  
 87. ...  
 88. ...  
 89. ...  
 90. ...  
 91. ...  
 92. ...  
 93. ...  
 94. ...  
 95. ...  
 96. ...  
 97. ...  
 98. ...  
 99. ...  
 100. ...

1. ...  
 2. ...  
 3. ...  
 4. ...  
 5. ...  
 6. ...  
 7. ...  
 8. ...  
 9. ...  
 10. ...  
 11. ...  
 12. ...  
 13. ...  
 14. ...  
 15. ...  
 16. ...  
 17. ...  
 18. ...  
 19. ...  
 20. ...  
 21. ...  
 22. ...  
 23. ...  
 24. ...  
 25. ...  
 26. ...  
 27. ...  
 28. ...  
 29. ...  
 30. ...  
 31. ...  
 32. ...  
 33. ...  
 34. ...  
 35. ...  
 36. ...  
 37. ...  
 38. ...  
 39. ...  
 40. ...  
 41. ...  
 42. ...  
 43. ...  
 44. ...  
 45. ...  
 46. ...  
 47. ...  
 48. ...  
 49. ...  
 50. ...  
 51. ...  
 52. ...  
 53. ...  
 54. ...  
 55. ...  
 56. ...  
 57. ...  
 58. ...  
 59. ...  
 60. ...  
 61. ...  
 62. ...  
 63. ...  
 64. ...  
 65. ...  
 66. ...  
 67. ...  
 68. ...  
 69. ...  
 70. ...  
 71. ...  
 72. ...  
 73. ...  
 74. ...  
 75. ...  
 76. ...  
 77. ...  
 78. ...  
 79. ...  
 80. ...  
 81. ...  
 82. ...  
 83. ...  
 84. ...  
 85. ...  
 86. ...  
 87. ...  
 88. ...  
 89. ...  
 90. ...  
 91. ...  
 92. ...  
 93. ...  
 94. ...  
 95. ...  
 96. ...  
 97. ...  
 98. ...  
 99. ...  
 100. ...

TAFEL 19  
Urk. Hawara XIV – Verso

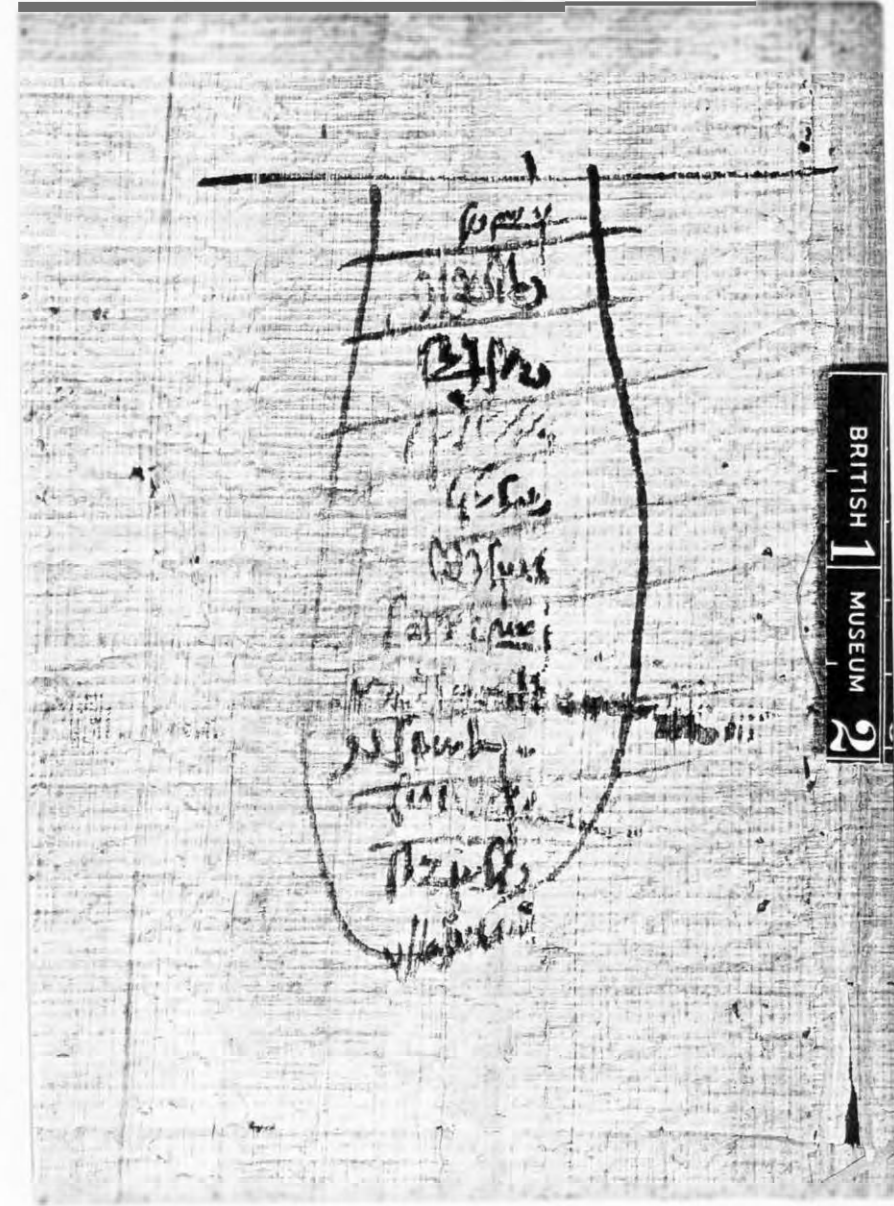


BRITISH MUSEUM 2

BRITISH MUSEUM 2

Fragment of an ancient papyrus document with several lines of Coptic script. The text is written in a cursive hand and is partially obscured by a large, dark, scribbled-out area in the center. The fragment is divided into sections by vertical lines, possibly representing columns or individual entries. The script is dense and difficult to decipher due to the damage and the nature of the papyrus.

TAFEL 20  
Urk. Hawara XV – Verso



20 zu 49 86534 - Sup. 28. 29. 30. 31. 32. 33. 34. 35. 36. 37. 38. 39. 40. 41. 42. 43. 44. 45. 46. 47. 48. 49. 50. 51. 52. 53. 54. 55. 56. 57. 58. 59. 60. 61. 62. 63. 64. 65. 66. 67. 68. 69. 70. 71. 72. 73. 74. 75. 76. 77. 78. 79. 80. 81. 82. 83. 84. 85. 86. 87. 88. 89. 90. 91. 92. 93. 94. 95. 96. 97. 98. 99. 100.



1. *[Faded Coptic text]*

5. *[Faded Coptic text]*

10. *[Faded Coptic text]*

15. *[Faded Coptic text]*

20. *[Faded Coptic text]*

*[Vertical Coptic text fragment]*

*[Vertical Coptic text fragment]*



1.

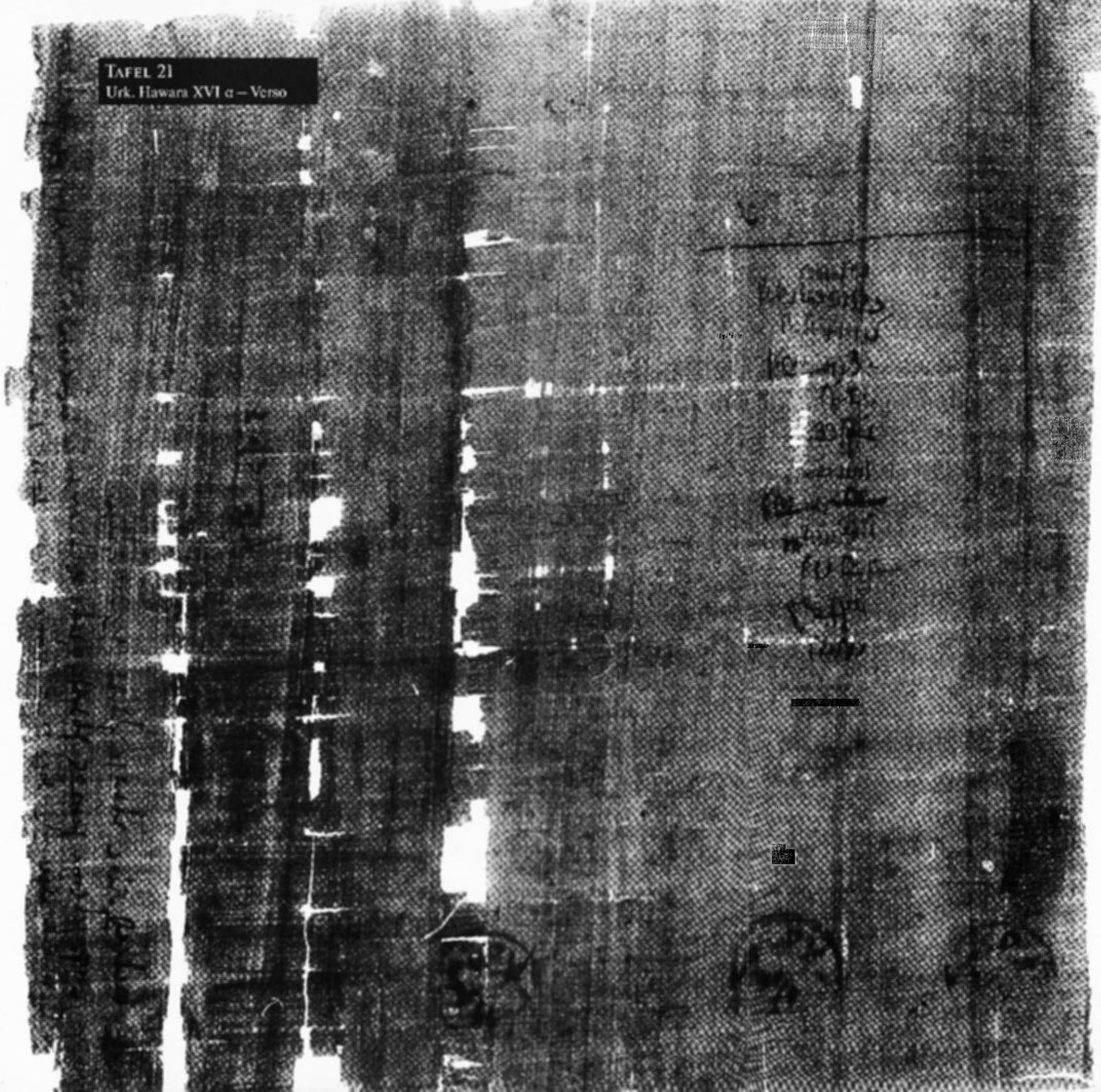
5.

10.

15.

20.

TAFEL 21  
Urk. Hawara XVI c - Verso



21 20 40 86 53 - Sample 28, T&J, rec. for H&U

1. *[Faded Greek text]*

4. *[Faded Greek text]*

8. *[Faded Greek text]*

12. *[Faded Greek text]*

16. *[Faded Greek text]*

20. *[Faded Greek text]*

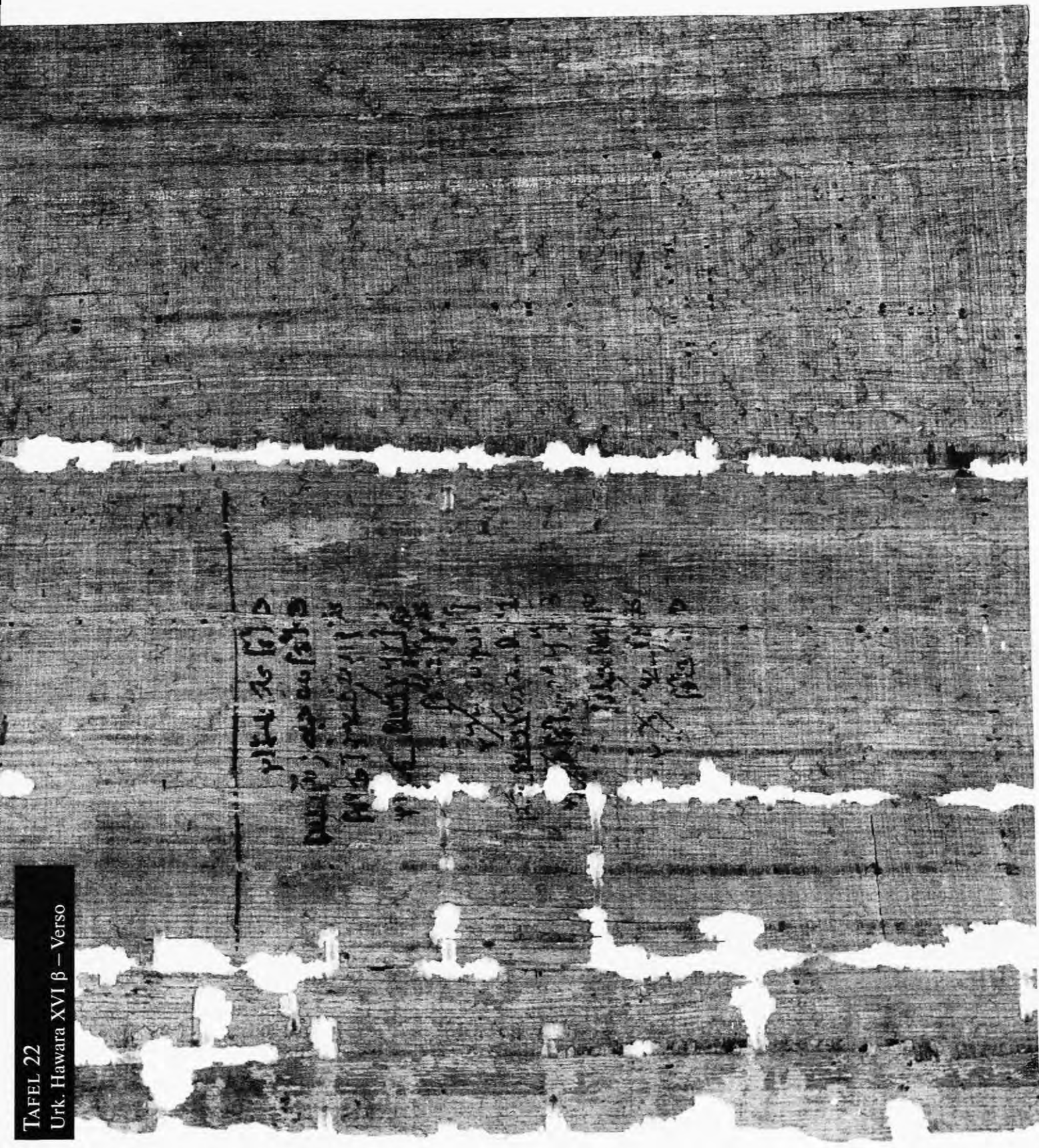
5. *[Faded Greek text]*

10. *[Faded Greek text]*

15. *[Faded Greek text]*

20. *[Faded Greek text]*

TAFEL 22  
Urk. Hawara XVI β - Verso



Handwritten text in a cursive script, likely from an ancient document. The text is arranged in several lines and is partially obscured by damage. The characters are dark and appear to be a form of early Greek or Latin script.

Handwritten text in Coptic script, arranged in approximately 22 horizontal lines. The script is dense and characteristic of early Christian manuscripts. The text is written in black ink on a light-colored background, with some areas appearing slightly faded or obscured by the scanning process.

3.

6.

9.

12.

14.

17.

20.

22.

3.

6.

9.

12.

14.

17.

20.

22.



TAFEL 23  
Urk. Hawara XVII α – Verso



23 24 40 86 593 - 20000, 20, Tot. 100 [10 H 1/2]

Handwritten text in Coptic script, arranged in approximately 20 horizontal lines. The script is dense and appears to be a form of early Christian or administrative writing. The text is written in black ink on a light-colored background. The lines are numbered on the right side of the page, from 5 to 20. The text is written in a cursive style, with some characters being difficult to distinguish due to the image quality. The overall appearance is that of an ancient manuscript fragment.





1. *[Faded Coptic text]*  
 2. *[Faded Coptic text]*  
 3. *[Faded Coptic text]*  
 4. *[Faded Coptic text]*  
 5. *[Faded Coptic text]*  
 6. *[Faded Coptic text]*  
 7. *[Faded Coptic text]*  
 8. *[Faded Coptic text]*  
 9. *[Faded Coptic text]*  
 10. *[Faded Coptic text]*  
 11. *[Faded Coptic text]*  
 12. *[Faded Coptic text]*  
 13. *[Faded Coptic text]*  
 14. *[Faded Coptic text]*  
 15. *[Faded Coptic text]*  
 16. *[Faded Coptic text]*  
 17. *[Faded Coptic text]*  
 18. *[Faded Coptic text]*  
 19. *[Faded Coptic text]*  
 20. *[Faded Coptic text]*  
 21. *[Faded Coptic text]*  
 22. *[Faded Coptic text]*  
 23. *[Faded Coptic text]*  
 24. *[Faded Coptic text]*  
 25. *[Faded Coptic text]*

5.

10.

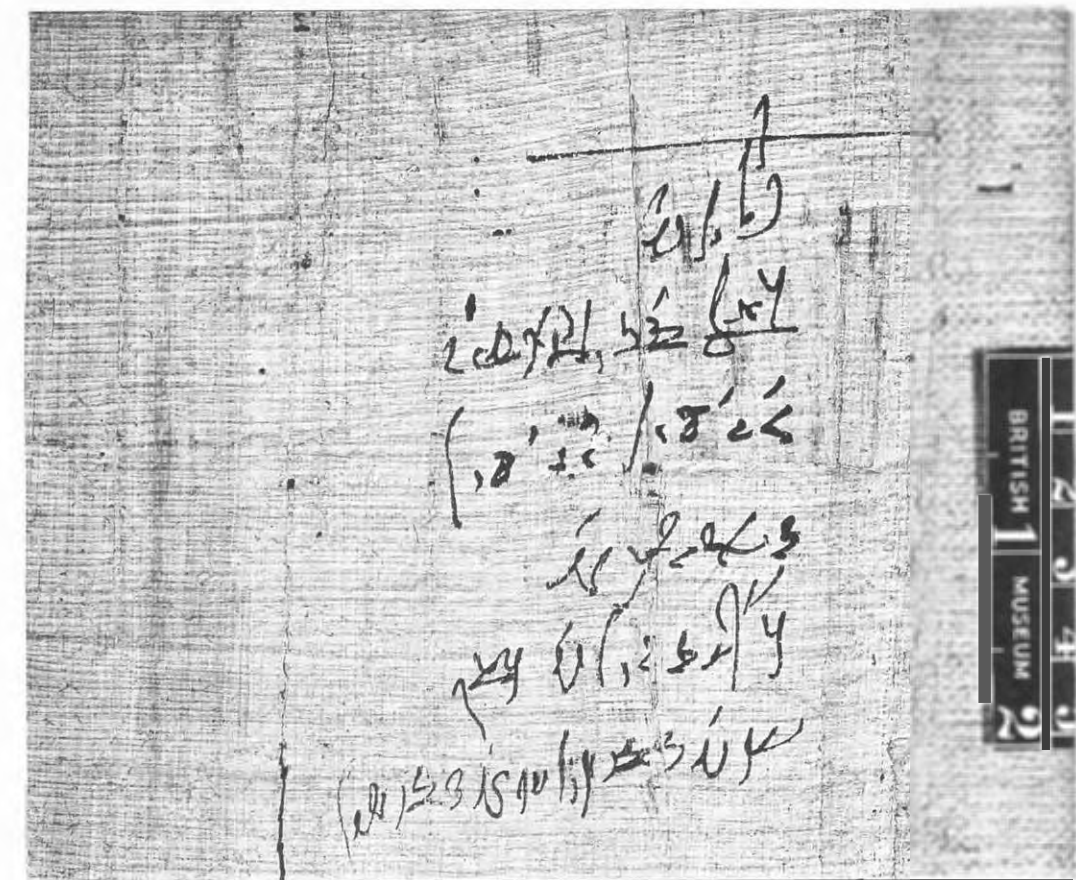
15.

20.

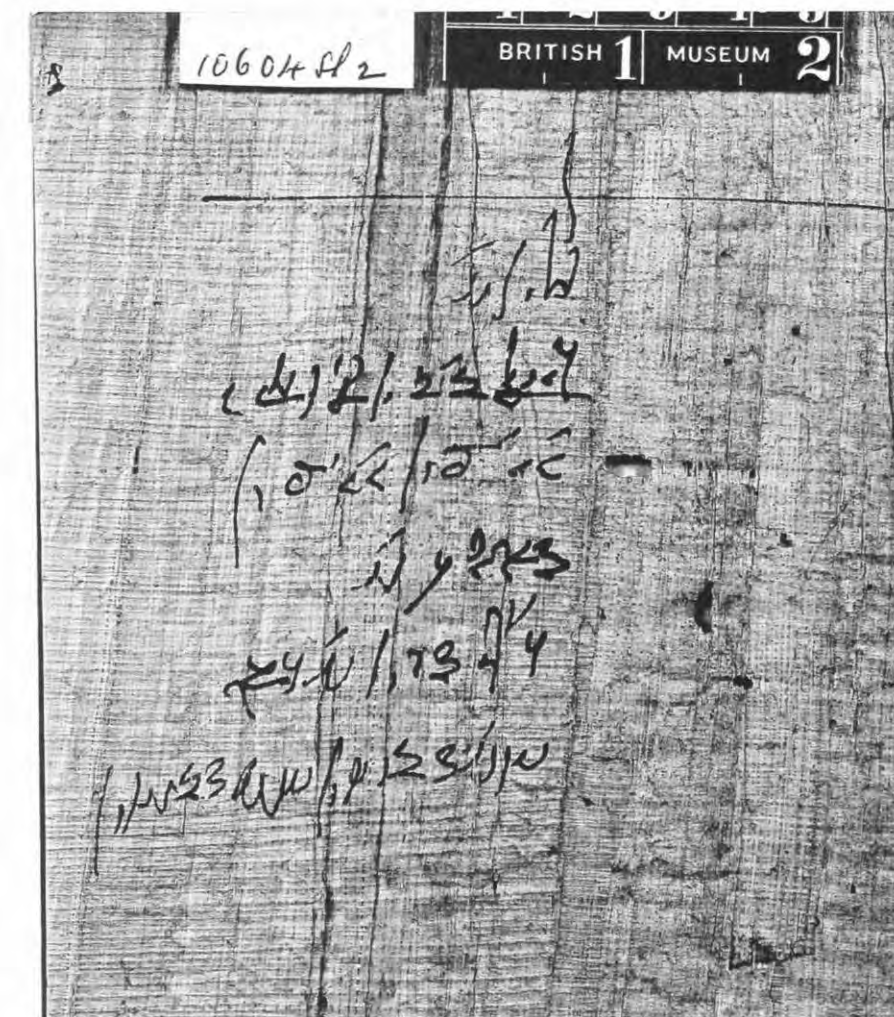
25 zu 40 816 534 - Suppl. 28, Taf. 227 [in Hülle]



TAFEL 26  
Urk. Hawara XIX b – Verso



TAFEL 26  
Urk. Hawara XIX a – Verso



TAFEL 27  
Urk. Hawara XX – Recto

5. 5. 10. 10. 15. 15.

Fragment of a papyrus scroll with two columns of Coptic text. The text is written in a dark ink on a light-colored, textured background. The script is a form of Coptic, likely from the Hawara papyri. The fragment is numbered on both sides with the numbers 5, 10, and 15, indicating line numbers. The text is arranged in two columns, with the right column being more legible than the left. The right column contains several lines of text, including what appears to be a heading or title at the top, followed by several lines of prose. The left column is partially obscured by a vertical tear or fold in the papyrus, but some text is still visible. The overall appearance is that of an ancient manuscript fragment.

27 zu 40 86 534 - Suppl., 28, Taf. <C> [in Hülle]

Handwritten text in a cursive script, likely a historical document or manuscript. The text is dense and spans several lines across the top left portion of the page.

Handwritten text in a cursive script, continuing from the left side. It is located in the top right portion of the page.

A horizontal strip of text, possibly a signature or a specific section header, located in the lower middle part of the page. The text is written in a cursive script and is partially obscured by dark, rectangular markings that appear to be redactions or damage to the original document.

TAFEL 28  
Urk. Hawara XXI b – Verso

Handwritten text in Coptic script, likely a list or record, located on the left side of the fragment. The text is arranged in a vertical column and includes several lines of characters, some of which are partially obscured by the fragment's edge.

Handwritten text in Coptic script, likely a list or record, located on the right side of the fragment. The text is arranged in a vertical column and includes several lines of characters, some of which are partially obscured by the fragment's edge.

Ⲛⲓⲛⲓ

Ⲛⲓⲛⲓ

Ⲛⲓⲛⲓ

Ⲛⲓⲛⲓ

Ⲛⲓⲛⲓ

Ⲛⲓⲛⲓ

Ⲛⲓⲛⲓ

Ⲛⲓⲛⲓ

Ⲛⲓⲛⲓ





29 24 4° 8' 53" - Sund. 28. Tol. 40 (in Wily)

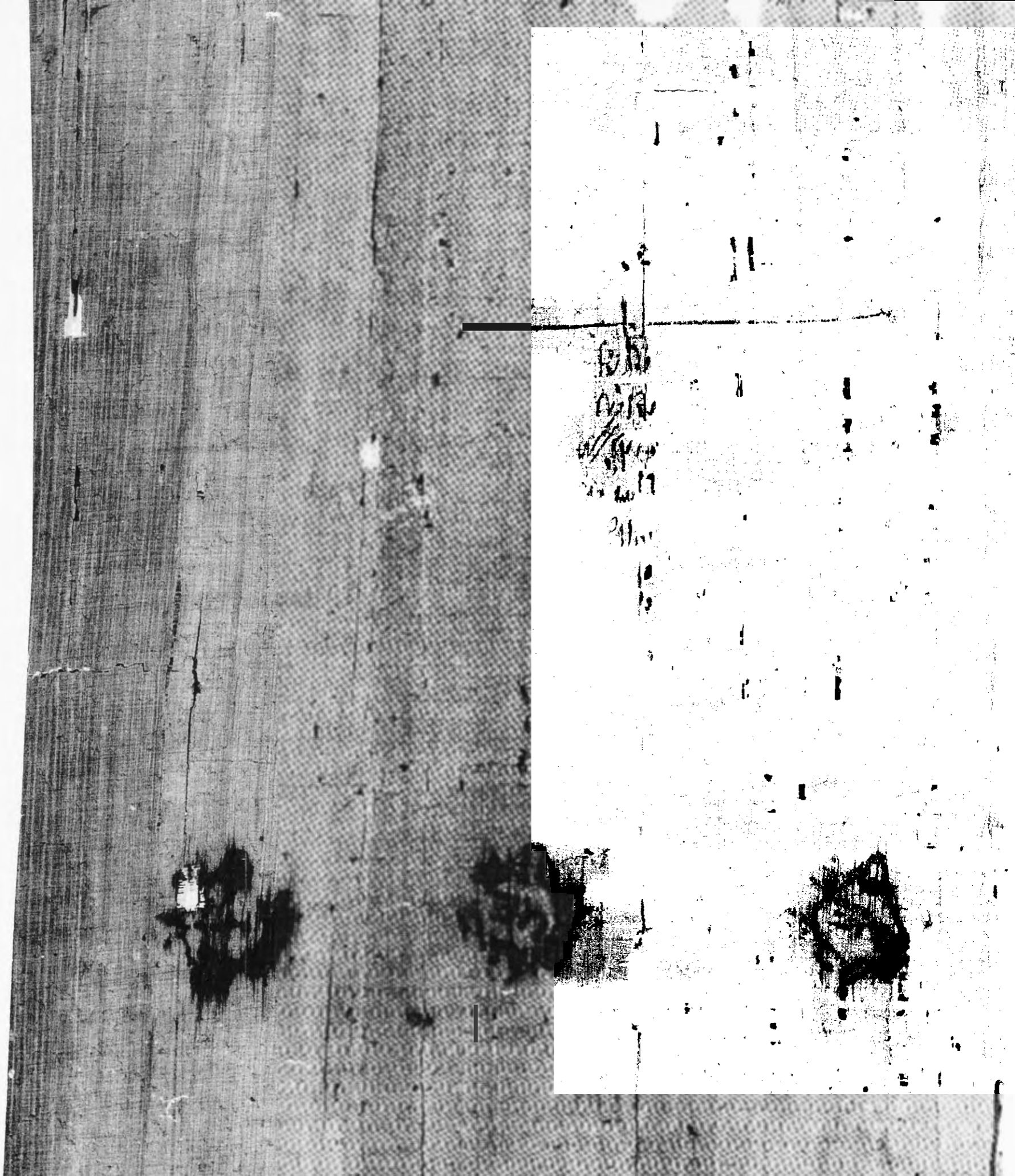
1. *[Faded Coptic text]*

5. *[Faded Coptic text]*

9. *[Faded Coptic text]*

*[Faded Coptic text on the right side of the page]*

*[Faded Coptic text at the bottom of the page]*



Urk. Hawara XXIV A–G:  
s. Spiegelberg, Demot. Denkm. III, Tf. L–LII.

30 zu 40 86 534 - Sample 28. Taf. 40 [in Hell.]

